

RENEW S/W DECORATIVE FACIA BOARDS & SOFFIT BOARDS,
REFORM VERGE DETAIL TO EDGE OF PROJECTING SLATES (331)

REPLACE DAMAGED TIMBER RIDGE FINIAL (331)

FIT VENTILATOR COWLS TO TOP OF
EXISTING POTS (363)

RENEW MORTAR FLAUNCHING
TO TOP OF STACK AROUND
POTS (363)

RAKE OUT & REPOINT BRICKWORK TO
ALL FACES OF UPPER PART OF 2NO. STACKS
(363)

TAKE OFF EXISTING SLATE ROOF FINISH,
RIDGE TILES ETC., REPAIR & RESLATE (332)

INSPECT LEAD BACK GUTTER, SOAKERS &
STEPPED FLASHINGS TO CHIMNEY STACK NO.2
FOR POSSIBLE REUSE,
ALLOW FOR REPLACING WITH NEW LEAD
BACK GUTTER, SOAKERS & STEPPED FLASHINGS,
DRESS LEAD INTO EXISTING GROOVES/JOINTS,
POINT WITH SEALANT AFTER ROOF REPAIRS (341)

TAKE DOWN R/W GOODS, O/H/AUL,
REDECORATE, REFIX IN PLACE (351)

TAKE OUT TIMBER FRAME & PANEL
TO OPENING OF W.11,
REPLACE WINDOW FRAME IN SOFTWOOD,
PROFILES TO MATCH ORIGINALS,
FIXED CASEMENT, ALL GLAZED (3712)

IN 3NO. LOCATIONS TO
EAST ELEVATION FST. FL. LEVEL-
TAKE OUT VENTILATION GRILLES/AIRBRICKS,
BLOCK UP OPENINGS IN BRICKWORK
TO MATCH EXISTING (361)

FORM STONE PIECE REPAIR
TO STRING COURSE (365)

TAKE OUT CONCRETE BLOCKS
TO OPENING OF W.1,
REPLACE WINDOW FRAME IN SOFTWOOD,
PROFILES TO MATCH ORIGINALS,
FIXED CASEMENT, ALL GLAZED (372)

CHIMNEY STACK NO.1

CHIMNEY STACK NO.3

FIT VENTILATOR COWLS TO TOP OF
EXISTING POTS (363)
RENEW MORTAR FLAUNCHING
TO TOP OF STACK AROUND POTS (363)

RAKE OUT & REPOINT BRICKWORK TO
ALL FACES OF UPPER PART OF 3NO. STACKS (363)

INSPECT LEAD APRON FLASHINGS, SOAKERS &
STEPPED FLASHINGS TO CHIMNEY STACK NO.3
FOR POSSIBLE REUSE,
ALLOW FOR REPLACING WITH NEW LEAD
APRON FLASHINGS, SOAKERS & STEPPED FLASHINGS,
DRESS LEAD INTO EXISTING GROOVES/JOINTS,
POINT WITH SEALANT AFTER ROOF REPAIRS (341)

TAKE OFF EXISTING SLATE ROOF FINISH,
RIDGE TILES ETC., REPAIR & RESLATE (332)

TAKE OUT CONCRETE BLOCKS TO OPENING OF W.18,
REPLACE WINDOW FRAME IN SOFTWOOD,
PROFILES TO MATCH ORIGINALS,
FIXED CASEMENT, UPPER PANEL FITTED WITH
VENTILATION LOUVRES & MESH,
LOWER PANES GLAZED (3719)

TAKE OUT TIMBER FRAMES & PANELS TO OPENINGS OF W.9&10,
REPLACE WINDOW FRAMES IN SOFTWOOD,
PROFILES TO MATCH ORIGINALS,
FIXED CASEMENTS, ALL GLAZED (3710 + 3711)

RENEW JUNCTION DETAIL BETWEEN
MEDIEVAL & VICTORIAN ROOFS WITH
NEW LEAD SOAKERS & COVER FLASHINGS (342)

TAKE DOWN R/W GOODS, O/H/AUL,
REDECORATE, REFIX IN PLACE (351)

TAKE OUT TIMBER FRAMES & PANELS TO OPENINGS OF W.17,
REPLACE WINDOW FRAMES IN SOFTWOOD,
PROFILES TO MATCH ORIGINALS,
2NO. SIDE HUNG CASEMENTS TO LOWER WINDOWS,
FIXED TO UPPER LIGHTS, ALL GLAZED (3718)

TAKE OUT TIMBER FRAMES & PANELS TO OPENINGS OF W.8,
REPLACE WINDOW FRAMES IN SOFTWOOD,
PROFILES TO MATCH ORIGINALS,
SLIDING SASHES TO LOWER WINDOWS,
FIXED TO UPPER LIGHTS, ALL GLAZED (379)

READ IN CONJUNCTION WITH ALL OTHER DRAWINGS,
SPECIFICATION & ALL CONTRACT DOCUMENTS



STAINBURN TAYLOR
ARCHITECTS + HISTORIC BUILDING CONSULTANTS

Project:
LLANTHONY SECUNDA PRIORY LODGINGS
(REPAIRS TO VICTORIAN FARMHOUSE)

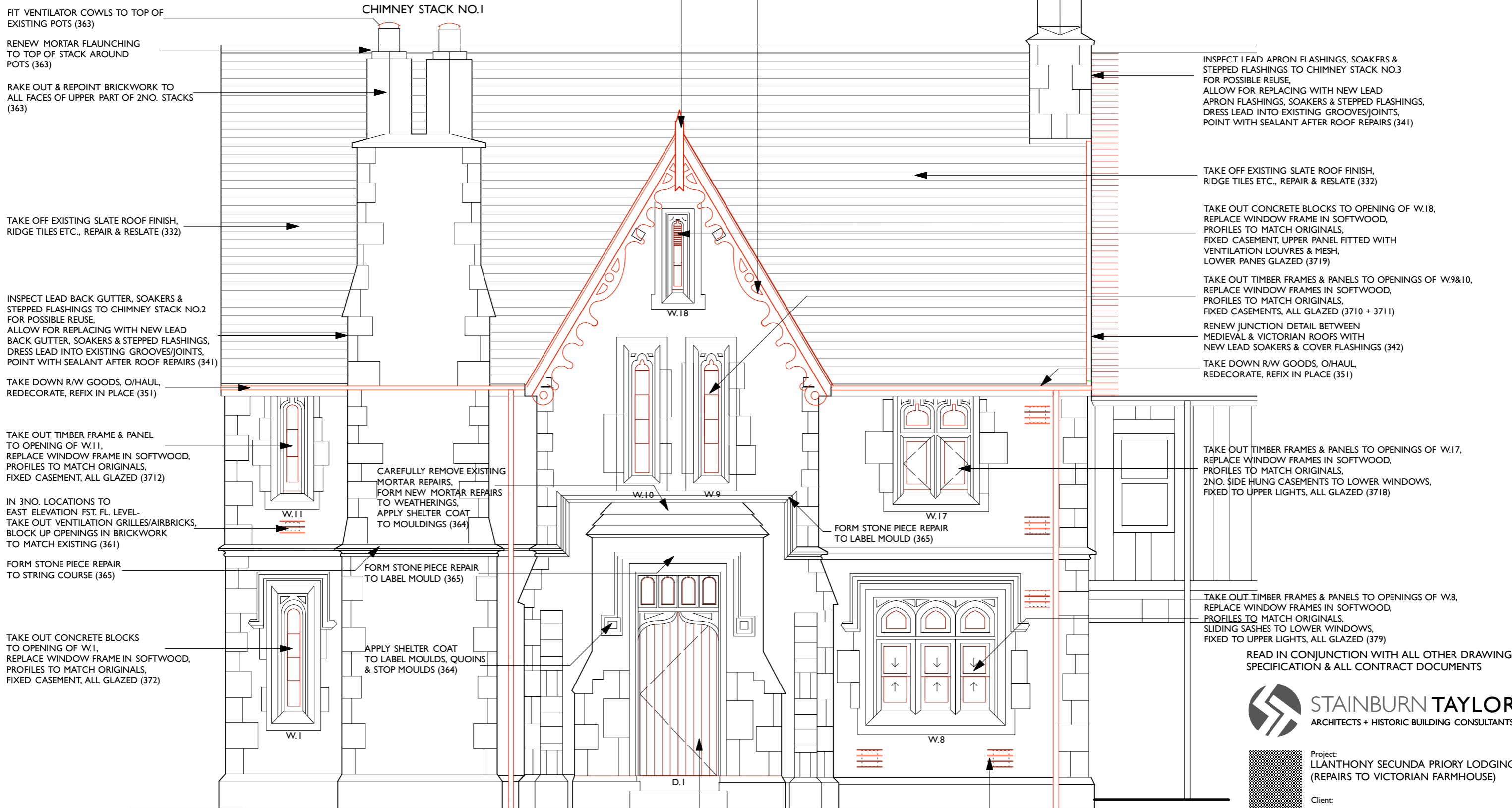
Client:
LLANTHONY SECUNDA PRIORY TRUST

Drawing:
PROPOSED REPAIRS
EAST ELEVATION

Number: 2430/3/06 Rev: Scale: @1:50 Date: 10/10 Drawn: MJG

SEAR HOUSE | BYE STREET | LEDBURY | HEREFORDSHIRE | HR8 2AA
T 01531 634848 | F 01531 633273
e contact@stainburntaylor.co.uk | www.stainburntaylor.co.uk

SCALED DIMENSIONS SHOULD NOT BE TAKEN FROM THIS DRAWING
ALL DIMENSIONS MUST BE CHECKED ON SITE BEFORE
CONSTRUCTION OR FABRICATION



TAKE OUT CONCRETE BLOCKS
TO OPENING OF W.1,
REPLACE WINDOW FRAME IN SOFTWOOD,
PROFILES TO MATCH ORIGINALS,
FIXED CASEMENT, ALL GLAZED (372)

CAREFULLY REMOVE EXISTING
MORTAR REPAIRS,
FORM NEW MORTAR REPAIRS
TO WEATHERINGS,
APPLY SHELTER COAT
TO MOULDINGS (364)

FORM STONE PIECE REPAIR
TO LABEL MOULD (365)

APPLY SHELTER COAT
TO LABEL MOULDS, QUOINS
& STOP MOULDS (364)

TAKE OUT TIMBER FRAME & DOOR TO D.1
FORM NEW BOARDED DOOR & FRAME D.1
TAKE OUT TIMBER FRAMES & PANELS TO
FANLIGHT OPENINGS OF D.1,
REPLACE FRAMES IN NEW OAK,
PROFILES TO MATCH ORIGINALS,
CASEMENTS, ALL GLAZED (442)

IN 3NO. LOCATIONS TO EAST ELEVATION GRND. FL. LEVEL-
TAKE OUT VENTILATION GRILLES/AIRBRICKS,
BLOCK UP OPENINGS IN BRICKWORK
TO MATCH EXISTING (361)